



COMPANY PRESENTATION

Our history... Our Values

2003

From the ten-year experience of its founders, a new industrial reality was born.

2005

Quality certification according to the standard:
UNI EN 9001:2000

2006

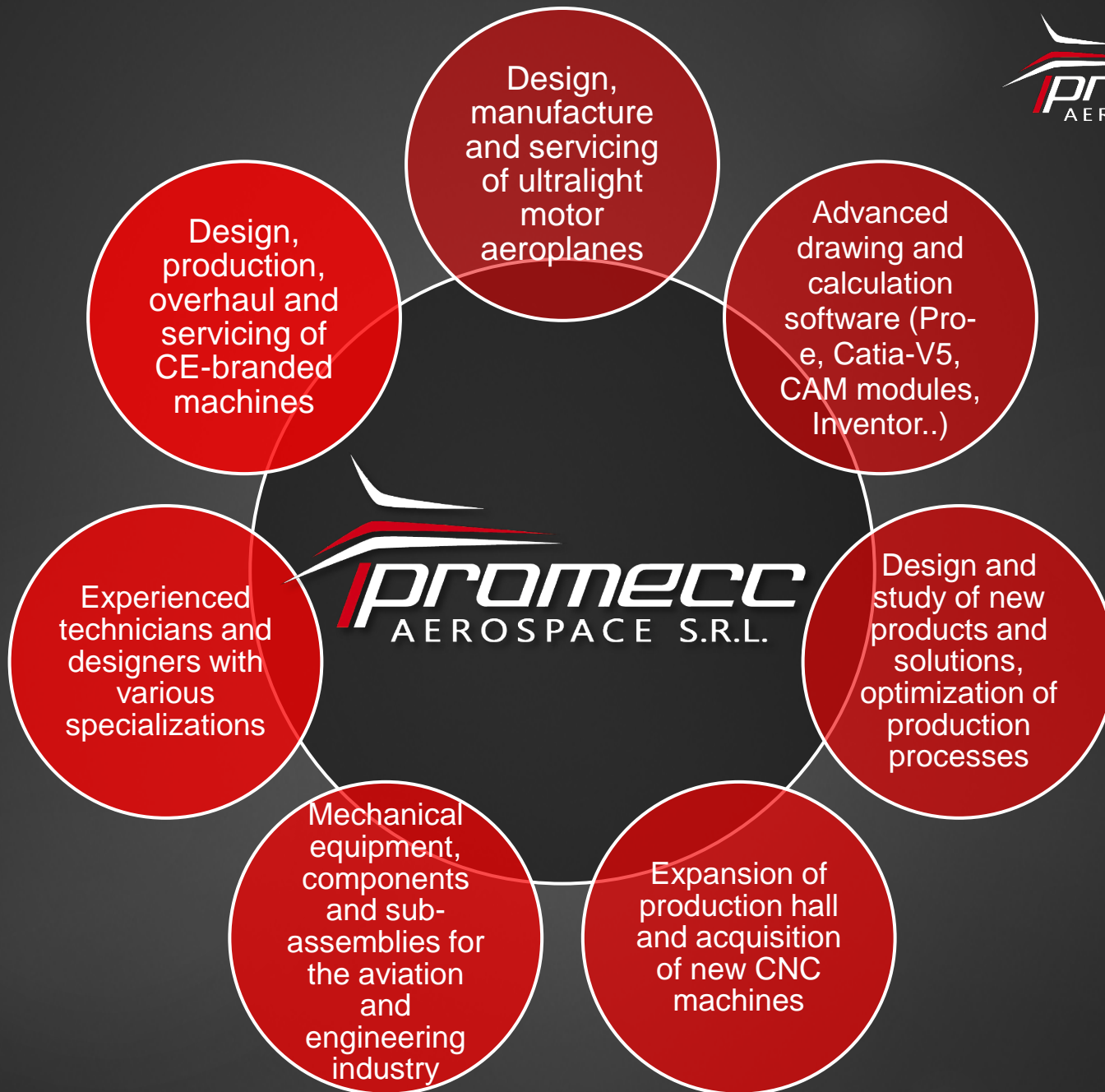
Acquisition of Aeronautical Certification according to the
EN 9100 standard

2007

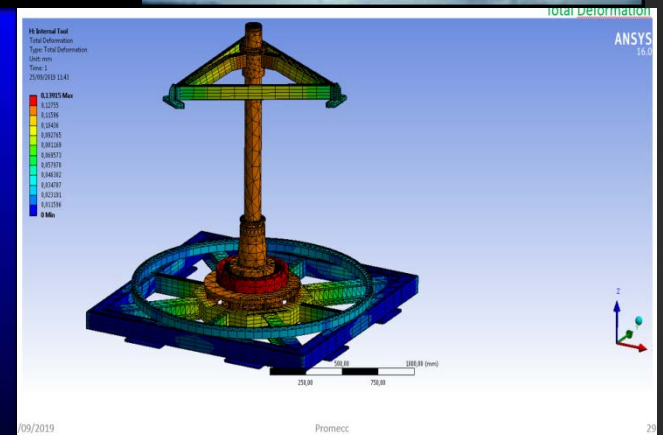
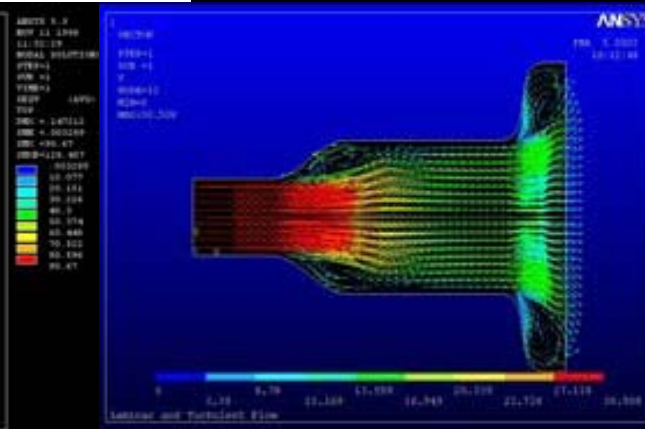
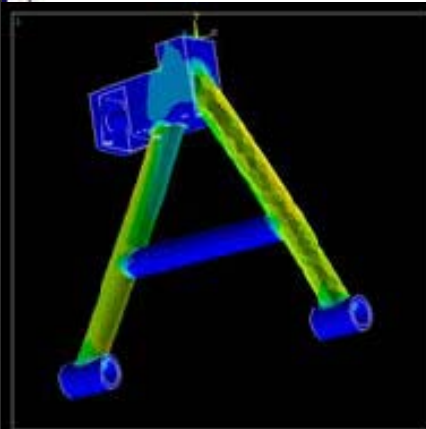
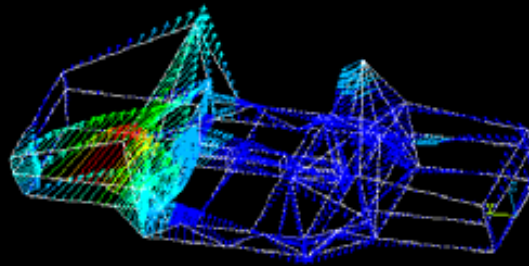
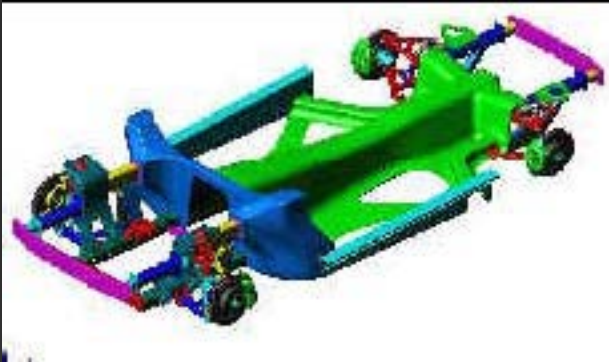
PRO.MECC S.r.l. associated with the Assindustria of Lecce is born;
in October we obtain the qualification **UNI EN 9100:2003** for the activities on parts destined for flight

2008

We obtain the qualification also for the certified construction of our aircrafts



Our Resources... Our Possibilities...



Promecc Aerospace S.r.l. is a solid and vital company and today represents a peak and strong expansion in the field of engineering and electromechanical construction.

In October 2007 it reached the prestigious milestone of **EN9100:2003**, consolidated subsequently with the achievement of the certification **UNI EN 9100:2009** at the certification body **UNAVIAcert**, which allowed access to activities on parts intended for flight.

This has pushed the company to invest in the training of specialized personnel for the realization and revision of particular AGE that today represent a significant part of the activities carried out.

Specifically, activities of:

- **Design construction and testing of metallic and non-metallic shipping container.**
- **Appraisal and successive general review of shipping container, metallic and not, used in aeronautical field for the transport of the motors or parts of them.**

AERONAUTICAL CONTAINER CONSTRUCTION AND OVERHAUL ACTIVITIES



Corigliano d'Otranto

Design activities
construction and test
shipping container

- LPT
- FHF
- LSH

Activity of revision and
putting in efficiency
shipping container for
the transport of the
aeronautical engines

- LM2500
- RB199
- EJ200
- T58
- PT6
- TP400
- T64
- VIPER

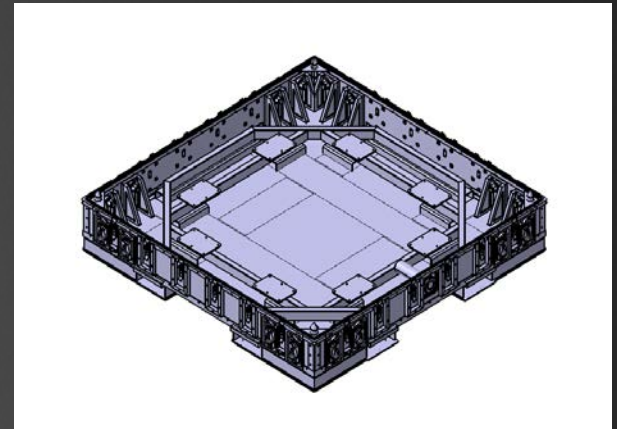
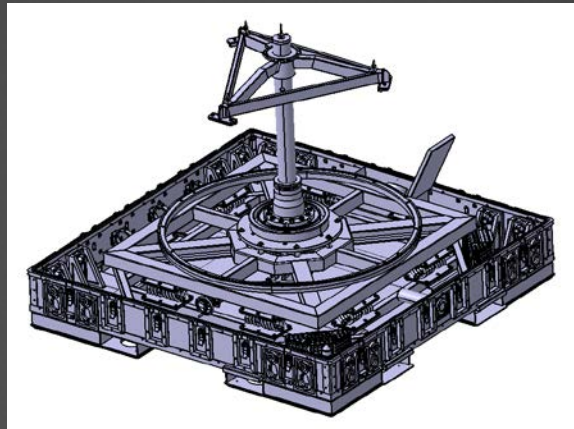
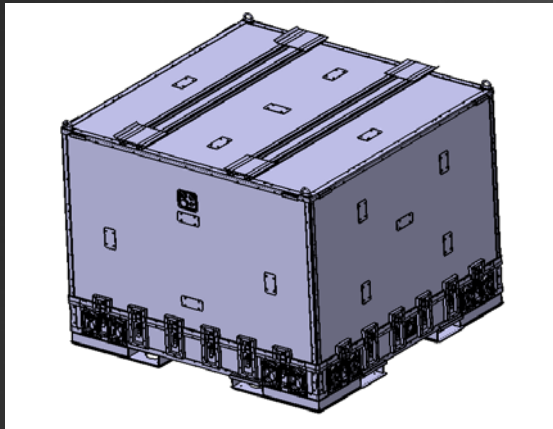
Design activities construction and test shipping container

INTERNATIONAL REFERENCE STANDARD:

- **SAE ARP 1840** – Aircraft Engine Transportation Device
- **SAE ARP 1967** – Containers, Shipping and Storage, Aircraft Engine and Modules- Metal, Reusable
- **SAE AS 27166** – Valve, Pressure Equalizing, Gaseous Products
- **SAE ARP 4776** – Pallet/Container loader auto-levelling systems
- **NAS 3610** – National aerospace standard for shipping pallet
- **SAE AS 1130** – Air and air/surface (platform) cargo pallets
- **ASTM D6055** – Standard test method for mechanical handling of unutilized loads and large shipping case and craft
- **SAE HS-1576** – SAE manual for incorporating pneumatic spring in vehicle suspension designs
- **MIL-HDBK-304C** – Package cushioning design

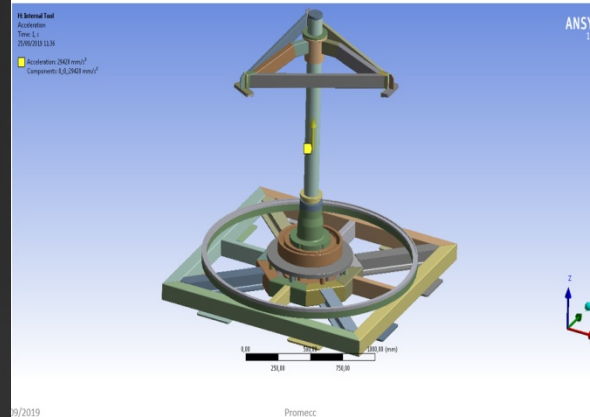
LPT SHIPPING CONTAINER:

DESIGN STEP:

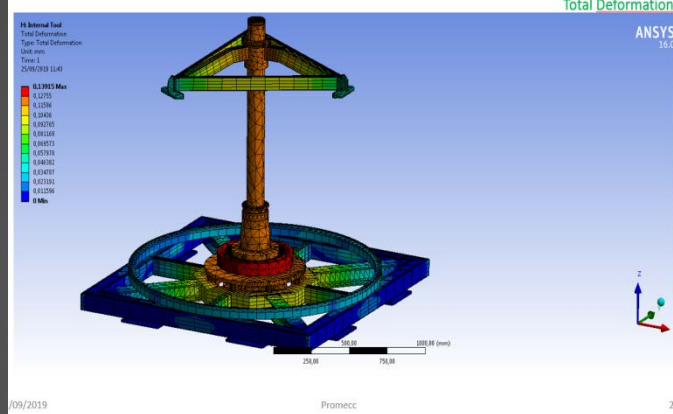


ANALYSIS STEP:

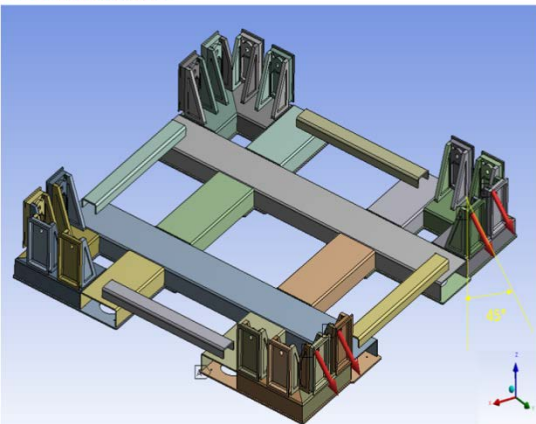
1 a_2. Rotor Lock and Central LPT Support Stress Analysis [case: 3G up](#)



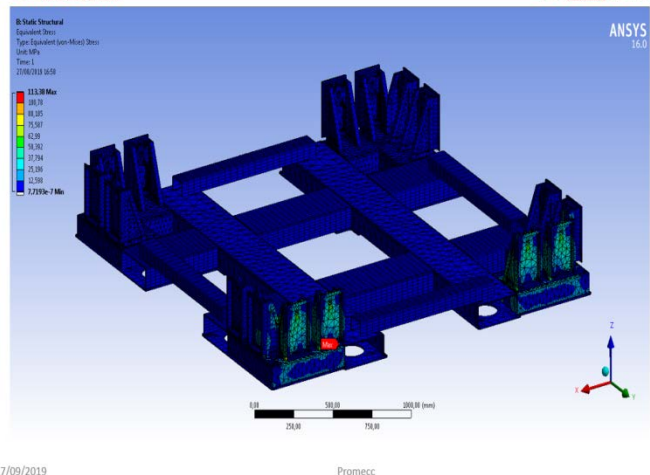
1 a_2. Rotor Lock and Central LPT Support Stress Analysis [case: 3G up](#)



6 a. Tie Downs



6 a. Tie Downs

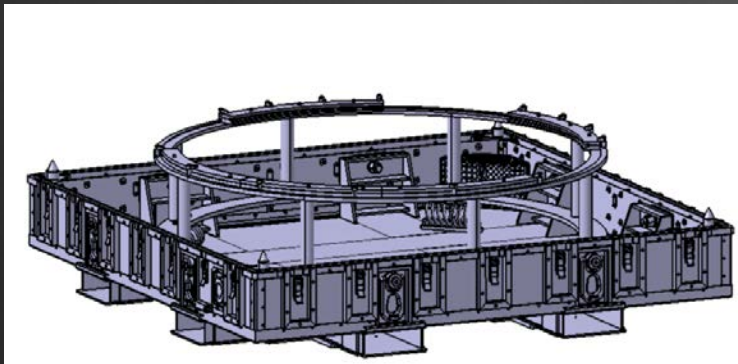
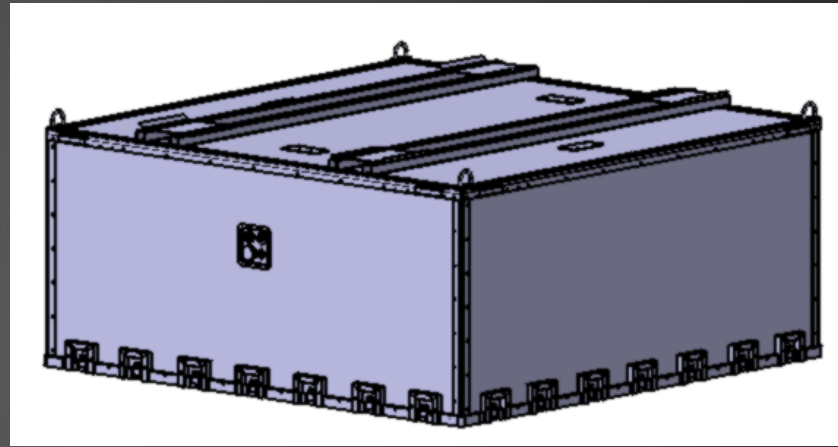
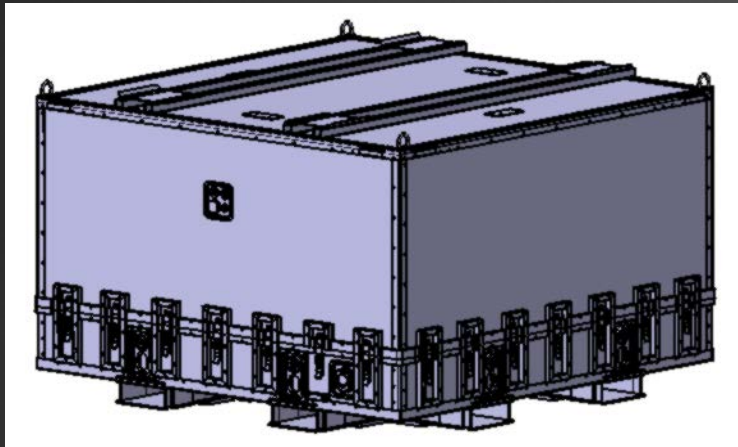


PRODUCTION STEP:



FHF SHIPPING CONTAINER:

DESIGN STEP:

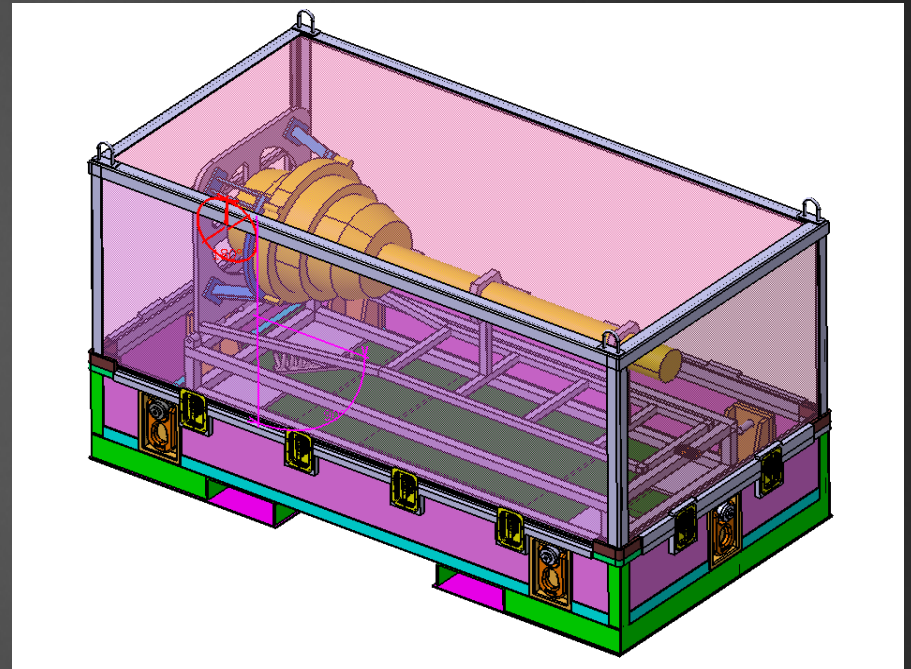
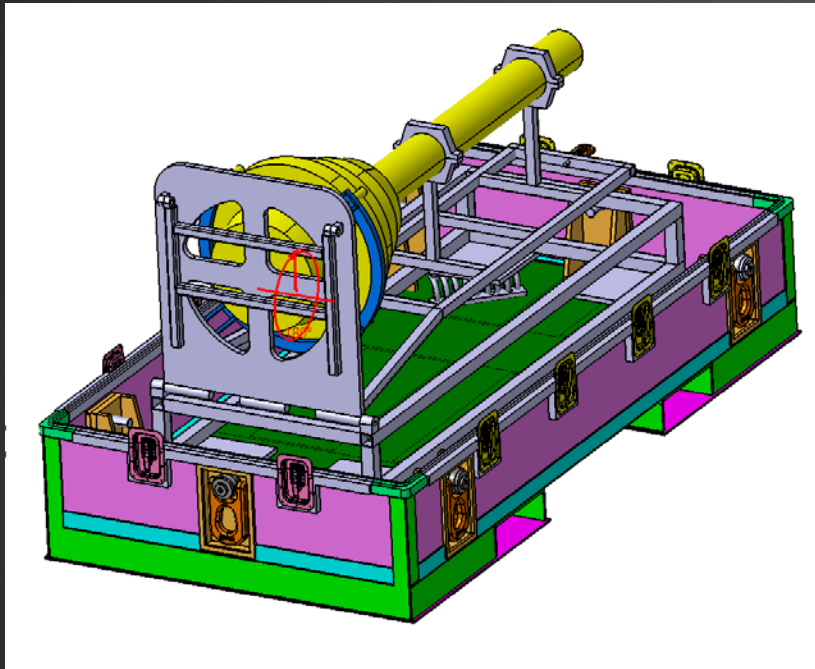


PRODUCTION STEP:



LSH SHIPPING CONTAINER:

DESIGN STEP:



Construction activity and shipping container review

LM 2500



RB 199



TP400

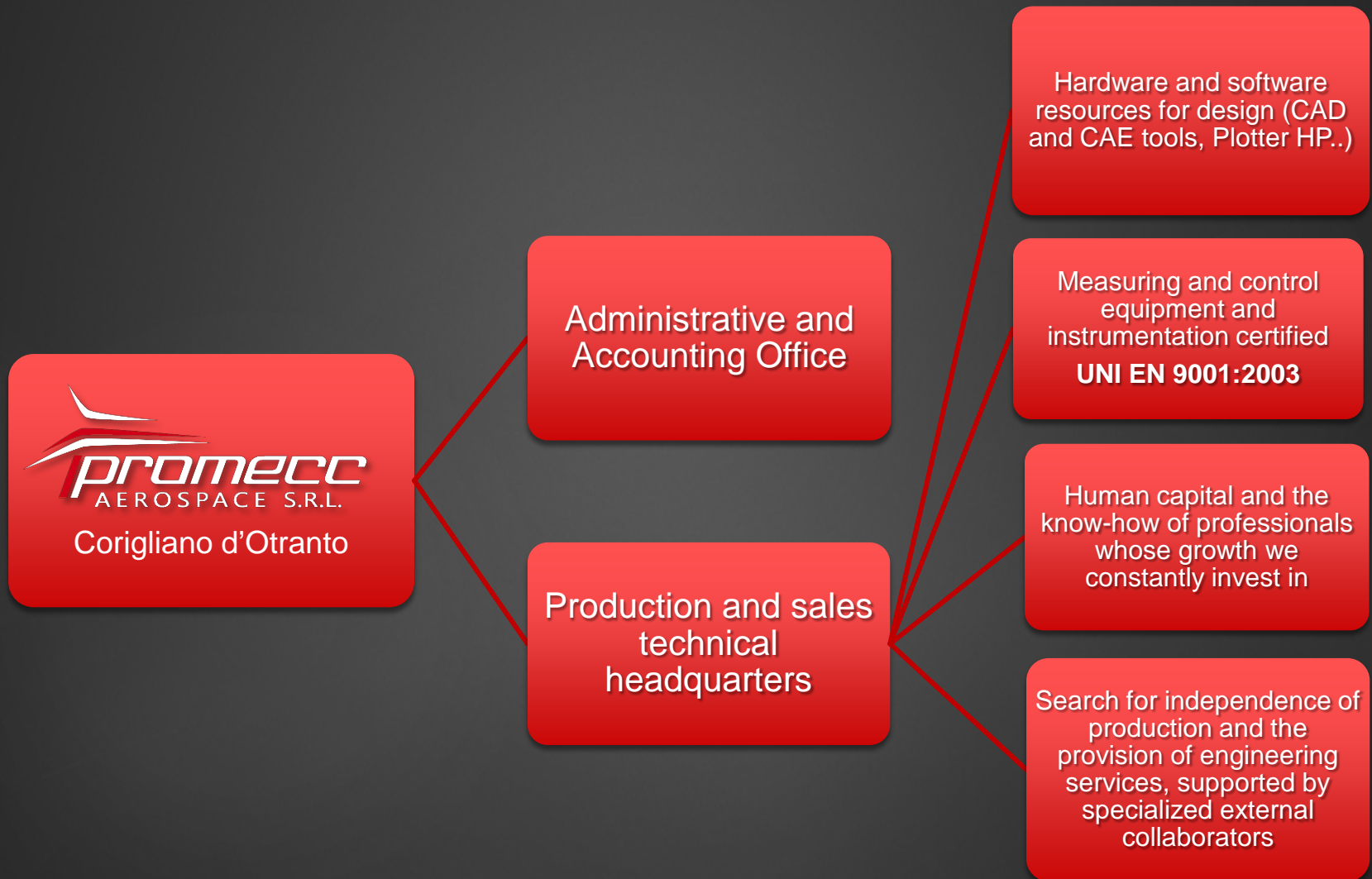




PT6



Our facilities... To do...



OUR HEADQUARTER



Sales Department



Technical Dept



Metrology Room and Testing Area



Front Office



Reception

The Equipment... our Aspirations...

Careful and modern organization of work and management of CNC machines with very high precision for the realization of projects calculated on customer needs and logic Design for X

Multi-axis vertical axis machining centers that guarantee high reliability and precision

Traditional machines, milling-boring machines and lathes (horizontal and vertical) for bulky machining

Planning and technical-management offices close to the production area to allow adequate control and supervision of operations

Control and overhaul equipment, including major three-dimensional computer machines

Analogue and digital equipment for checking the structural characteristics of materials (load cells and durometers)

Additional work equipment is:

In addition to various machines for traditional machining, we have:

- Hydraulic press;
- Vertical band saw for metal sheets, tubes and blocks;
- Distension oven for welded materials of dimensions 1000 x 500 x 500;
- Welding torches and generators for aluminium (TIG), Carbon steel (MIG) and Inox (TIG);
- Shooting and bench equipment, with complete tooling for machining, finishing and adjustment, as well as for electromechanical assembly.

In use at the company we also have our own means of transport vans and a 3 ton forklift.

Among the various collaborations with specialized third parties, we can make use of a modern machining center SINKER EDM, which allows us to realize more complex details with additional guarantee of stability and dimensional accuracy.

Support Resource:

With Rapid Prototyping processes, we can also create working prototypes, with a high degree of dimensional precision and with mechanical characteristics similar to those of the final product. In particular, we have a "3D laser printer" that employs a laser source and an epoxy resin bath allows to obtain within 24 36 hours complex components of medium size - large and with excellent surface finishes.

Safety and Work Organization:

Our organization follows with the utmost attention the aspects related to safety, both in its own plants and in the construction works and at third parties, according to the latest and most stringent legislative indications, see last D.L. 81/08 known as the Single Text on Safety in the Workplace, on the basis of which all our technicians and operators are trained and our facilities are periodically checked and maintained.

Something more...

Our main partners operate in the Apulian territory, while we count national and international suppliers for a wide range of components of specific aerospace application: electric, hydraulic, pneumatic, fittings, etc. The main areas covered by the workshops that collaborate with us on an ongoing basis are:

Mechanical workshops with high precision CNC machining centers and machine tools of various sizes and for multiple applications.

Turning and grinding centers specialized in metal working.

Thermal treatments, chemical and electrochemical surface coatings and preparation and application of industrial paints.

Electrical, hydraulic and pneumatic installers.

Carpentry and metal cutting centers with CNC Laser and Plasma machines.

Each contractor has equipment that meets quality standards, organised for logistical and efficiency reasons in planned and documented procedures.

The number of employees of 30 units, with an invoice of about 3ml of euros.



*Zona Artigianale S.S. 16 - Km 976
73022 – Corigliano D'Otranto (Lecce)
Tel. & Fax: 0836 / 329566*

*e-mail: www.aerospacesalento.com - aerospace@libero.it –
info@aerospacesalento.com*

P. IVA 04496840754